

Top of the Lake Invitational Race

Saturday, June 11, 2011

Neenah Nodaway Yacht Club

CHANGES TO **NOTICE OF RACE**

1 RULES

- 1.1 The race will be governed by the rules as defined in The Racing Rules of Sailing.
- 1.2 The following prescriptions of US Sailing will apply and will be stated in full in the sailing instructions
- 1.3 The Lake Michigan Performance Handicap Racing Fleet (LMPHRF) rules will be in effect for non-one-design fleets.
- 1.4 When there is a conflict between these Sailing Instructions and LMPHRF rules, these Sailing Instructions will take precedence.

2 ELIGIBILITY AND ENTRY

- 2.1 The race is open to keelboats that 1) are self-righting, 2) have an enclosed cabin, 3) have a self-bailing cockpit, and 4) have an auxiliary engine; it will also be open to any one-design fleet with three (3) or more boats registered.
- 2.2 Each boat must have at least two (2) crew members, including the helmsperson.
- 2.3 Eligible boats may enter by completing the attached form by the time of registration.

3 FEES

- 3.1 Required fees are as follows: \$22 before 6/4, \$27.00 after 6/4. This fee includes one meal ticket for the party/dinner afterwards. Checks made out to Neenah Nodaway Yacht Club and cash are acceptable forms of payment.
- 3.2 For the party/meal after the race, a fee of \$7 will be charged per adult, includes beverage. Children under 12 Free.

4 SCHEDULE

- 4.1 Registration: Saturday, June 11 from 8am to 9am
- 4.2 Dates of racing: the date of racing for all classes, *Spinnaker* and *Non-Spinnaker*, will be Saturday, June 11 from 11am to 6pm
- 4.3 Warning signal for the first race: 11am
- 4.4 The time limit for all boats: 5:30pm
- 4.5 Beverages from time of first finisher; dinner at Harbor Bar, **Stockbridge Harbor**: 5:30pm

5 SAILING INSTRUCTIONS

5.1 The sailing instructions will be posted on <http://www.nnyc.org> after 8am starting on Saturday, June 4.

6 VENUE

6.1 The racing area is the North end of Lake Winnebago with finish west of Stockbridge Harbor.

7 THE COURSE

7.1 There are two possible courses, and they are specified in the course diagrams included. The course will be chosen and signaled at the start, based on the weather conditions of the day.

8 SCORING

8.1 The Low Point System of Appendix A will apply. Non-one-design keelboats will be using PHRF Time-on-Time scoring.

9 PRIZES

9.1 Prizes will be given as follows:

<i>Number of entrants per class</i>	<i>Awards</i>
1-5 entrants	1 st place
6-8 entrants	1 st , 2 nd places
9+ entrants	1 st , 2 nd , 3 rd places

10 DISCLAIMER OF LIABILITY

10.1 Competitors participate in the race entirely at their own risk. See rule 4, Decision to Race. The organizing authority will not accept any liability for material damage or personal injury or death sustained in conjunction with or prior to, during, or after the race.

11 SAFETY

11.1 Safety boats will not be provided.

11.2 The Race Committee may not start a fleet if they feel the conditions warrant additional safety measures.

11.3 The safety of a yacht and her crew is the sole and inescapable responsibility of the owner, or owner's representative who shall do his or her best to ensure the yacht is sound, thoroughly seaworthy and manned by a crew sufficiently experienced and physically fit to face expected weather conditions. The owner is responsible to see that all safety equipment is properly maintained and stowed and that the crew knows where it is kept and how it is used.

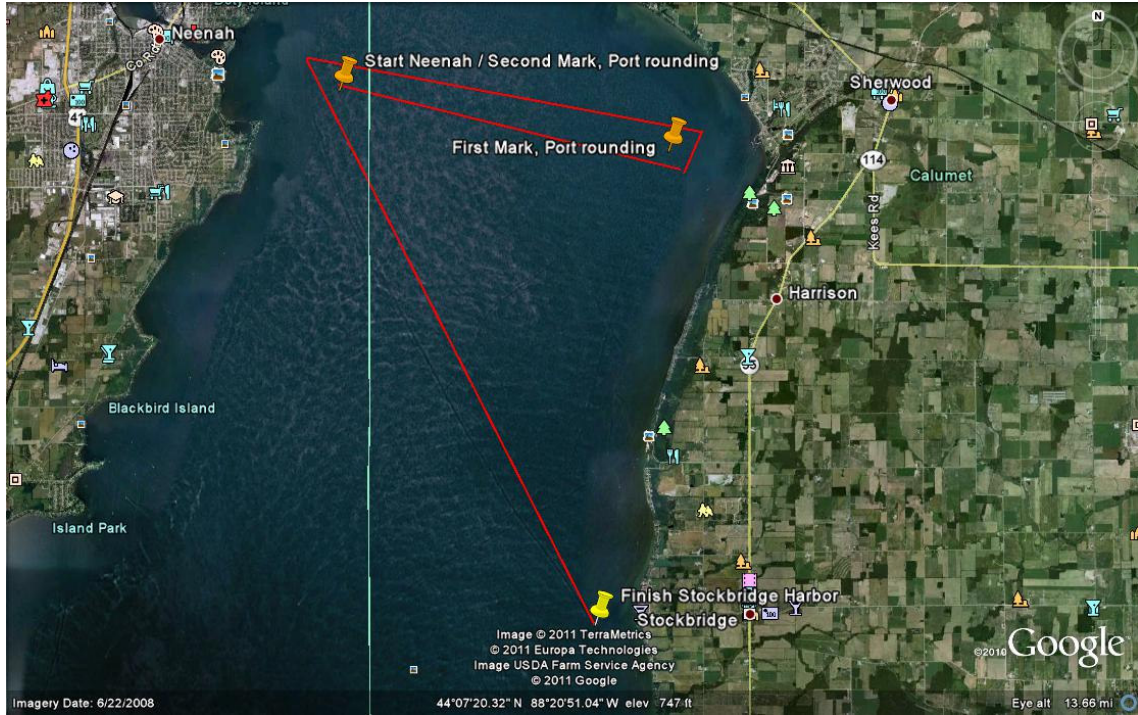
12 FURTHER INFORMATION

12.1 For further information please contact:

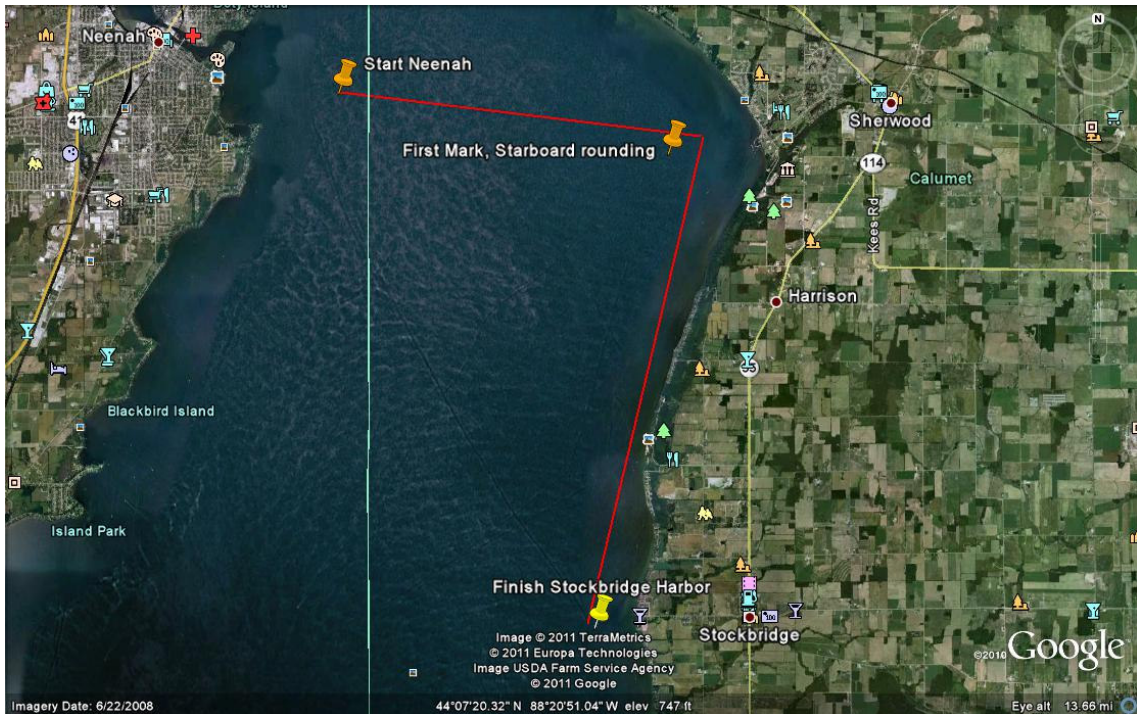
NNYC Rear Commodore Philip Coe 920-858-6523 RearCommodore@nyc.org	NNYC Social Director Tim Florek 920-786-8877 Social@nyc.org
--	--

13 COURSES

13.1 Course A



13.2 Course B



Top of the Lake Invitational Race Sponsors



- *Oshkosh Tent and Awning Co. Inc.*
110 East Fernau Ave Oshkosh, WI
Toll Free 800-861-9341 Phone 920-235-3170 Fax 920-235-7100



